



CHARLEVILLE SDE

STUDENT LAPTOP HIRE SCHEME

What is the Laptop Hire Scheme?

The scheme offers eligible students enrolled at Charleville SDE the opportunity to use their ICT subsidies to hire a laptop from the school. The parent/carer opts into the program, pays a yearly fee of \$500 and signs a Memorandum of Understanding (MOU) to agree to participate in the scheme. The student is then sent a laptop computer that has been checked and set up with all requirements, including software, needed to access all Distance Education resources and platforms.

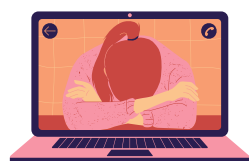


Warranty and Support



The device comes with a three year warranty. It is also fully supported by our school technician who receives priority service from the Department's Service Centre. The device can receive remote support from the school technician. In the event that the device needs to be returned for repair, a new device (when possible) will be sent prior to ensure continuity of use.

More information



1 What's Included?

The scheme provides a laptop, carry bag, mouse and relevant software.



4 Damage

The device is covered for warranty faults. The family is liable for non-warranty repair costs. It is recommended that options are explored for insurance.



2 Home Printer

Each laptop will come with an administrator account and password. Parents can then install printers and other devices as needed.



5 Touch Screen

Research has shown that a touch screen enables more varied interaction with information, programs and media.



3 Is it safe?

The laptop comes with Bluecoat K9 proxy client that prevents students from accessing inappropriate content.



6 Peripherals

Students would benefit from having access to an additional monitor for use during on-air lessons.

How to Participate



Email the school to request more information and forms for your student to be a part of our Laptop Hire Scheme.

Business Manager:
Michelle Aspinall - maspi3@eq.edu.au or
4656 8910

Digital Learning Facilitator:
Sam Owczarek - sowcz1@eq.edu.au or
4656 8915